

PRODUCT DESCRIPTION & FEATURES

Trimflute is a subtle square fluted profile. The long flute gives the profile its strength with long spanning capabilities. Trimflute can be used as a roofing as well as a cladding profile.

- The square flutes of Trimflute type sheeting ensure excellent drainage characteristics.
- The contemporary appearance of Trimflute is aesthetically appealing.
- Trimflute can be factory cranked, curved and bullnosed to a wide range of radii. For further details contact our Technical Department.

SAMPLE SPECIFICATION

The sheeting shall be Trimflute type profile as manufactured by Safintra Roofing. The profile shall be roll-formed with 6 trapezoidal ribs at 203 mm, centers with a net cover of 1015 mm. The rib height shall be 26.5 mm and shall be fixed in accordance with the manufacturer's recommendations.

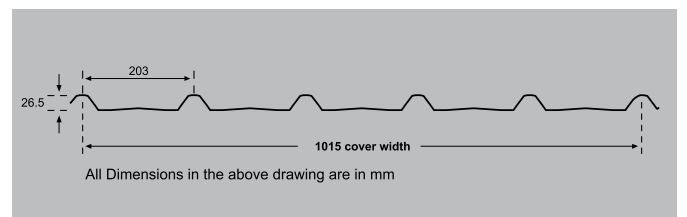
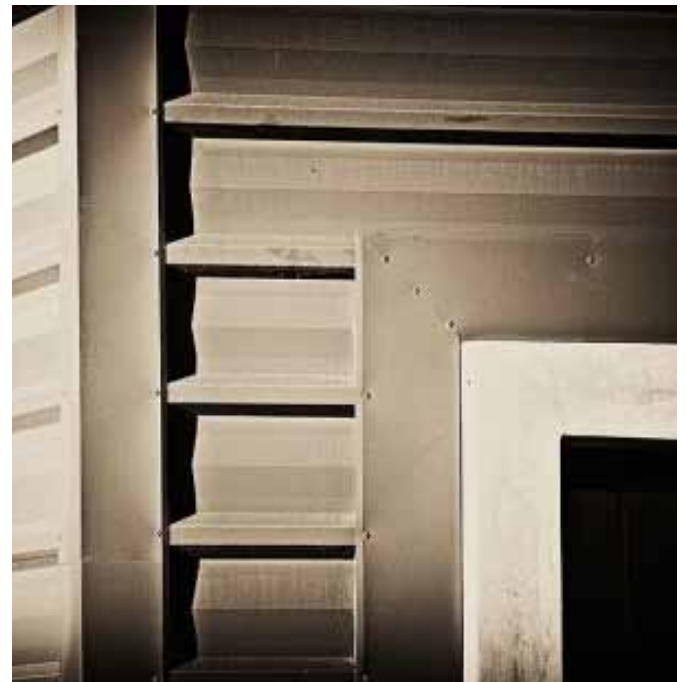
Safintra 0.50 mm thick, ZincAl® AZ 150 Trimflute Profile Roof Sheeting, fixed to internal steel purlins at 1600 mm centers and to ridge and eaves purlins at 1400 centers, with 12 x 65 mm long class 3 metal self drilling screws at every second crest, internal purlins and every crest. Eaves purlins side laps to be stitched at 500 mm centers between purlins all in accordance with manufacturers recommendations.

FASTENING

Trimflute is pierce-fixed to timber or steel supports. This means that fastener screws pass through the sheeting. You can place screws for Trimflute through the crests or in the valleys. To maximise water tightness, always place roof screws through the crest. For walling, you may use either crest or valley fixing. Always drive the screws perpendicular to the sheeting, and in the centre of the corrugation or rib. Don't place fasteners less than 25 mm from the ends of sheets.

The edge of Trimflute with the anti-capillary groove is always the under-lap. It is generally considered good practice to use fasteners along side-laps however, when cladding is supported as indicated in purling spacings, side-lap fasteners are not usually needed for strength.

End-laps are not usually necessary because Trimflute is available in long lengths. If you want endlaps, seek advice from your nearest Safintra office on the sequence of laying and the amount of overlap. When Trimflute is laid on slopes of 7.5 degrees or more, cut back the corner of the undersheet, at the downhill end of the sheet to block capillary action.





LENGTHS & ROOF PITCH

When using Widedek sheeting the recommended minimum pitch for roof slopes in excess of 15m is 10° and for slopes less than 15m is 7,5°. Widedek sheeting can be ordered in any length, subject to transport limitations, up to 13,2m. Longer lengths require special transport arrangements.

TOLERANCES

A length variation range of +/-5,0mm, and width tolerance of +/-3,0mm are permissible



MATERIAL OPTIONS

Aluminium - Zinc	Gauge (mm)
AZ150 G550 Unpainted	0.47 0.5 0.53 0.58 0.8
ZA150 G550 Painted	0.47 0.5 0.53 0.58 0.8
Aluminium	Gauge (mm)
Aluminium Mill Finish	0.7 0.8
Aluminium G4 Colortech	0.7 0.8

PURLIN SPACINGS

Purlin Spacings are dependant on both downward loading and negative suction loading caused by wind. Your engineer should be consulted to calculate your load (kN/m²) for your particular application.

PURLIN SPACINGS

GAUGE	0.47mm	0.5mm	0.53mm	0.58mm	0.8mm	0.8mm
MATERIAL	ALUMINIUM-ZINC	ALUMINIUM-ZINC	ALUMINIUM-ZINC	ALUMINIUM-ZINC	ALUMINIUM-ZINC	ALUMINIUM
ROOFS	mm	mm	mm	mm	mm	mm
Single Span	1 350	1 350	1 500	1 500	1 800	800
End Span	1 400	1 400	1 550	1 550	1 850	850
Internal/Double Span	1 600	1 600	1 700	1 700	2 150	1 000
Cantilever (Unstiffened)	150	150	180	180	200	150
Cantilever (Stiffened)	300	300	300	300	360	200
SIDE CLADDING						
Single Span	2 000	2 000	2 300	2 300	2 350	1 200
End Span	2 100	2 100	2 400	2 400	2 450	1 300
Internal Span	2 400	2 400	2 600	2 600	2 700	1 500
Cantilever	200	200	300	300	400	300
Approximate Mass/m ²	3.56kg	4.54kg	4.93kg	5.50kg	7.5kg	3.9kg

Note:

During installation, clean the roof daily by removing all swarf, pop rivets and unused fasteners or any other debris.

Great South African Architecture

Govan Mbeki Sports Centre, Port Elizabeth



Photography by Dennis Gulchard

World Class Brands + Professional Relationships

Gillian Adendorff, Mauritz
Kenneth van Rooyen &
Karin Langer



Trimflute

Trimflute by Adendorff Architects&Interiors

Gillian Adendorff: "We opted to use the Trimflute profile on this project because of its distinctively contemporary architectural appeal. The wider sheet width also delivered a cost saving on this budget sensitive project. We have a long standing relationship with Safintra Roofing and are happy to have partnered with them again using their unique profile on this spectacular community development."

Trimflute is a square-fluted steel sheet with clean minimalist lines creating visually arresting depth of perspective for all roofing and cladding applications. It is also highly cost effective and provides excellent spanning capacity. A stiffening form in each pan permits wide support spacings to be used with safety.

The extra wide sheet (1015mm after roll forming) provides optimal cover per running metre, and a pan depth of 26.5mm easily handles water run-off, even at a minimum pitch of 7.5 degrees.

The Trimflute profile is also available in polycarbonate sheeting for natural lighting requirements.

Safintra Roofing has branches in: Johannesburg, Cape Town, Durban, Port Elizabeth, White River and Polokwane.

SAFLOK 700, SAFLOK 410, Widedek,
Trimflute & Versatile are registered
profiles and trademarks of Safintra.

www.safintra.co.za

SAFINTRA
world class roofing & steel



Adendorff
Architects & Interiors



SAFAL
GROUP

